

Vein in tunnel #3 at 310' right rib



VEIN CONTAINS Zn/Pb/Ag/Cu/Mo

Ag @ <1.6%

Zn @ <21.4%

Pb @ <16.7%

These are assay numbers. Cu and Mo were there however, the samples were picked from loop examination for Ag, Zn and Pb. S was high @ 17.6% (not the highest reading) and Fe was @ 28% (not the highest reading)



SPOT XRF SHOWS Zn @ <42%

ASSAY @ <21.4%

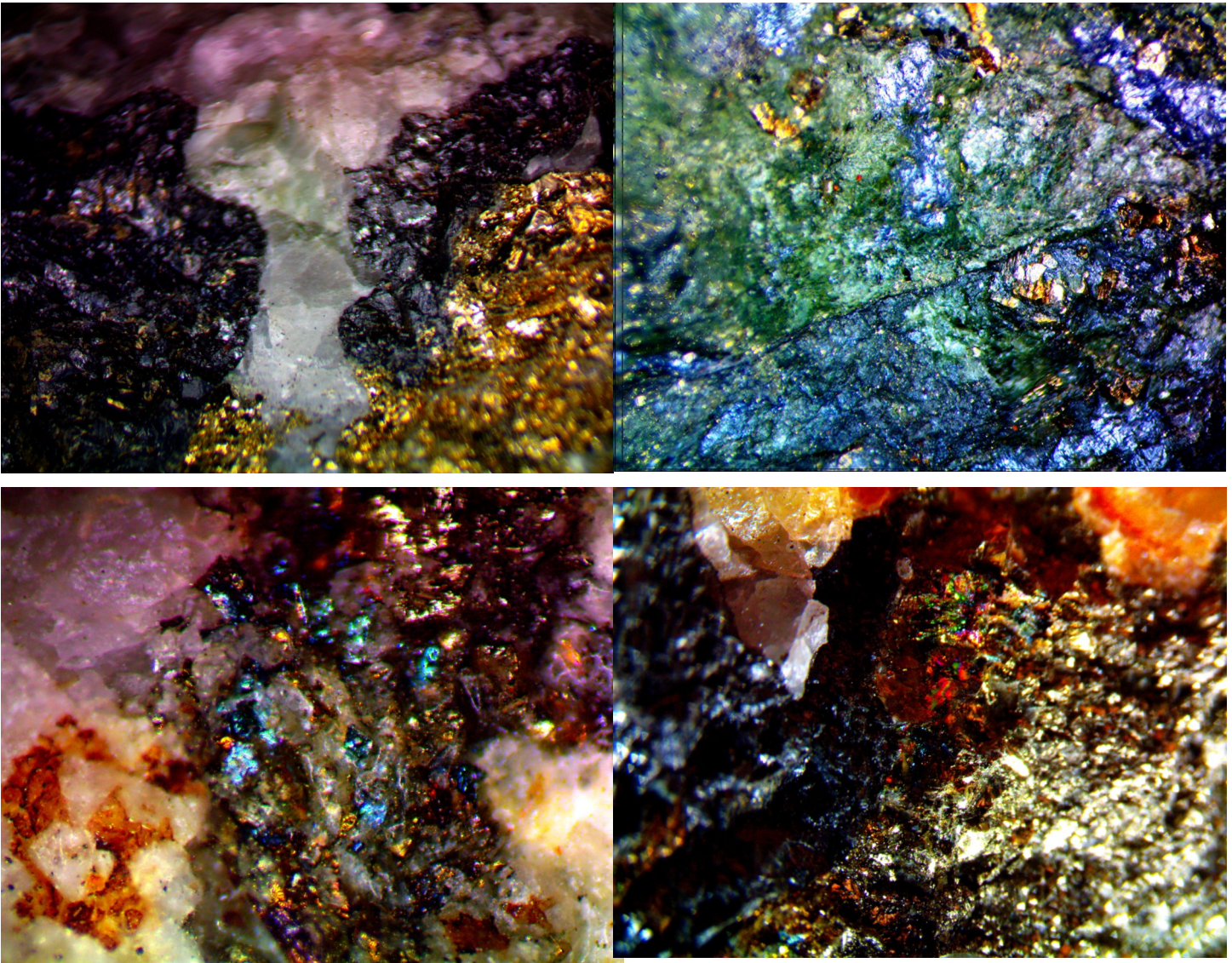
The XRF spot reading was very accurate compared to the assay. The assay of course contained gangue.

Other samples from the same vein

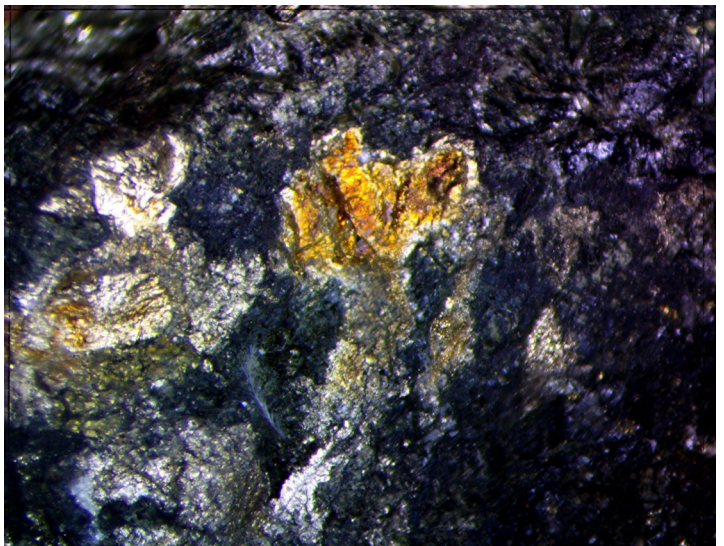
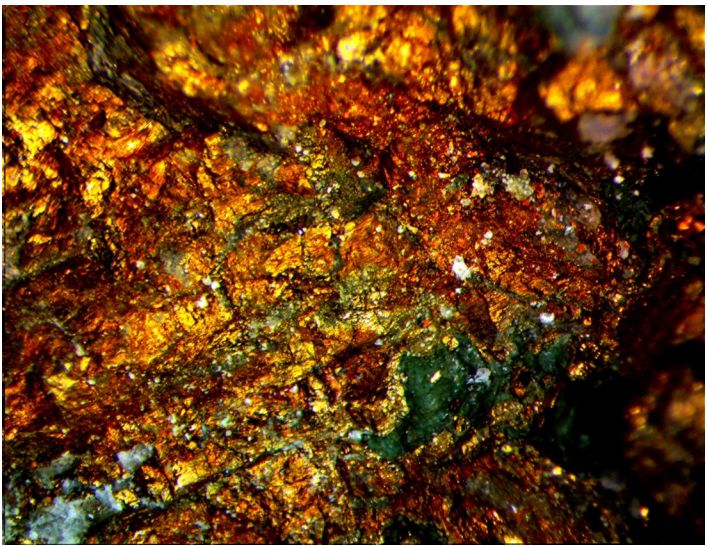
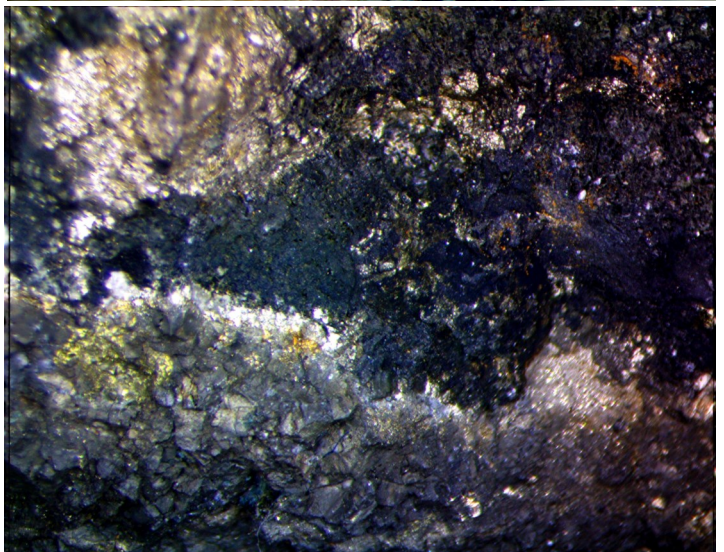
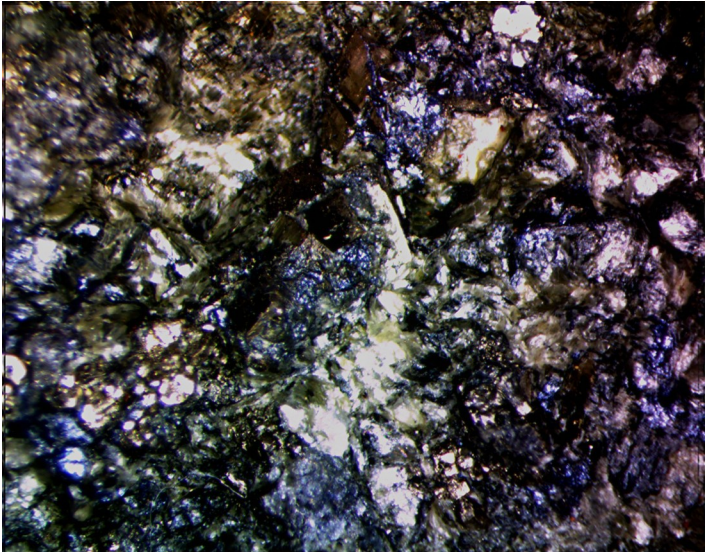
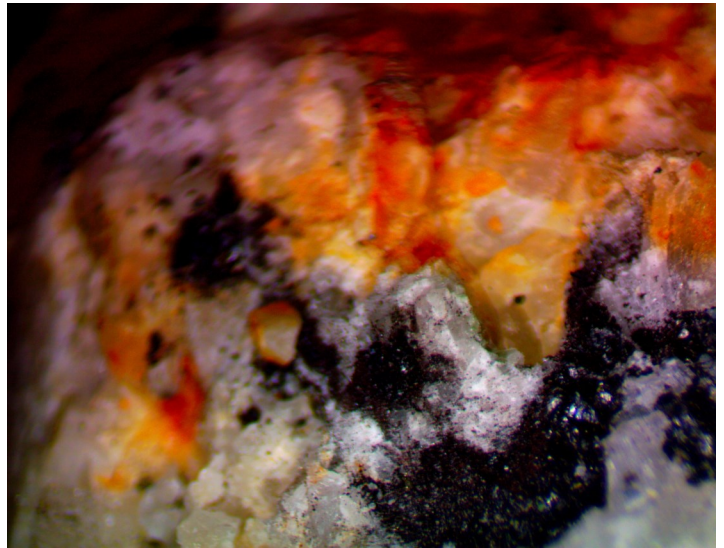
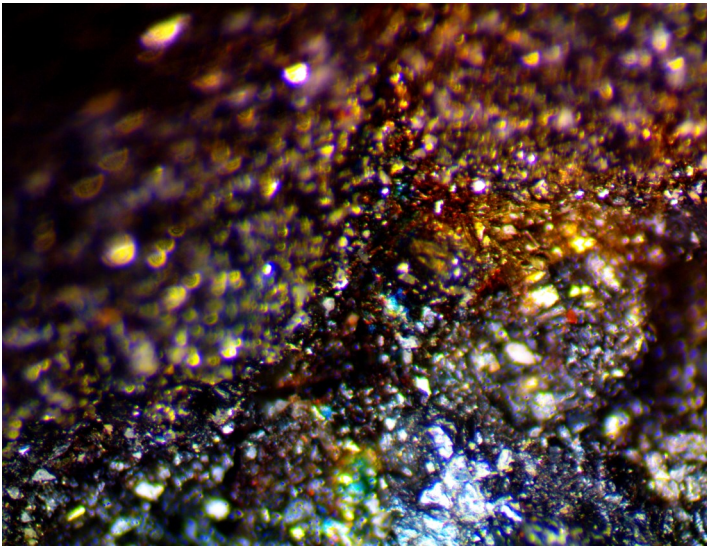


Micro pictures were taken from the vein pictured on page 1 and these samples.

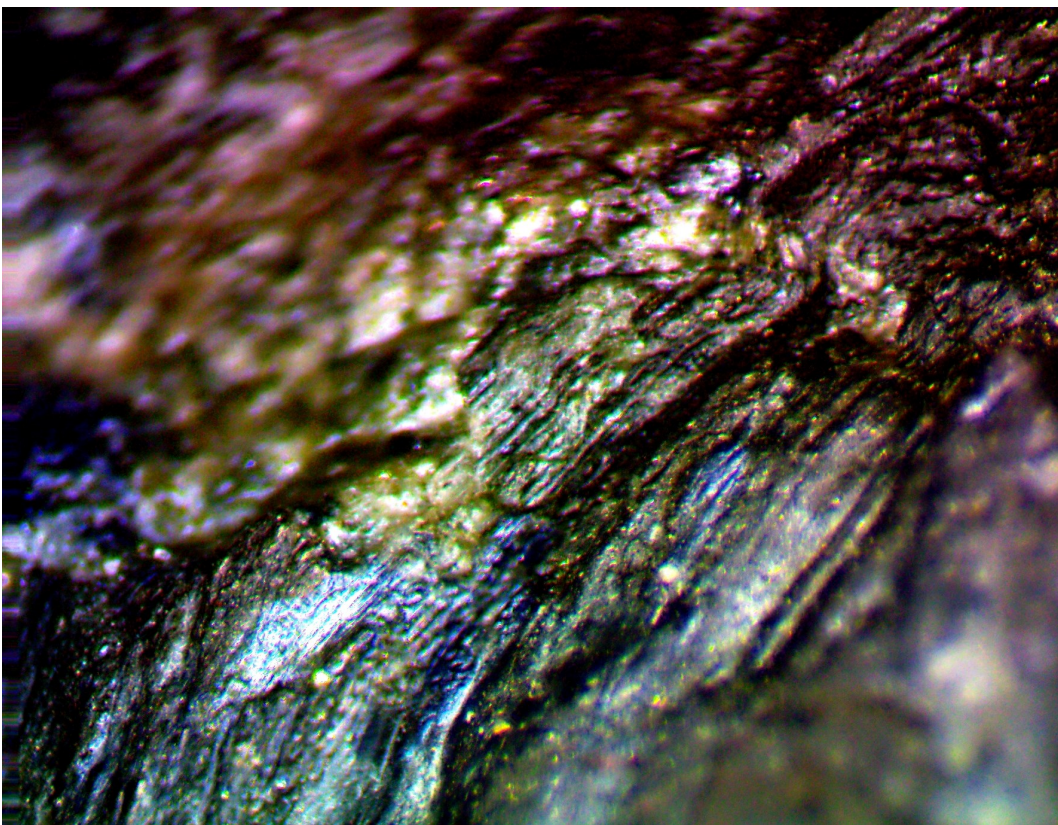
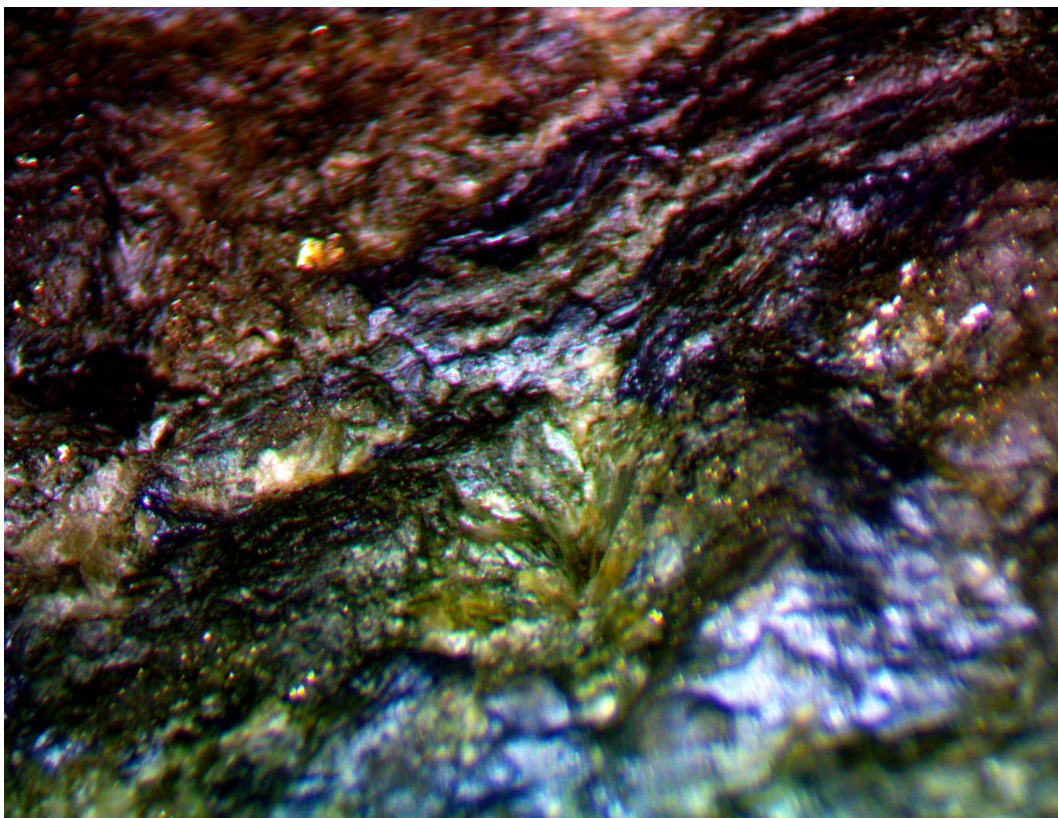
Under microscope



These pictures were all taken from the samples shown above.



More microscope pictures taken from NVH Project tunnel #3 @ 310' right-rib



These pictures may show an indication of graphite C? We have only sampled for C only a couple of time @ tunnel 1 which is where the magnetite and high mag readings are. More than likely the material is Mo.